

# MONTHLY MEMBERSHIP PROGRESS REPORT

LOCATION INDIA

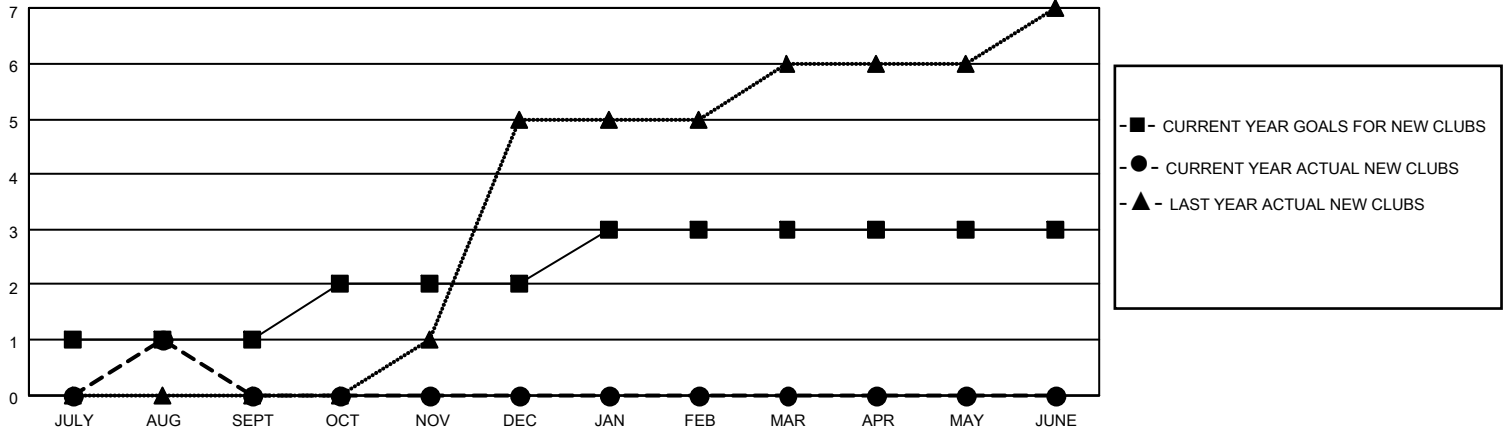
District 320 A

Results as of: 8/31/2021

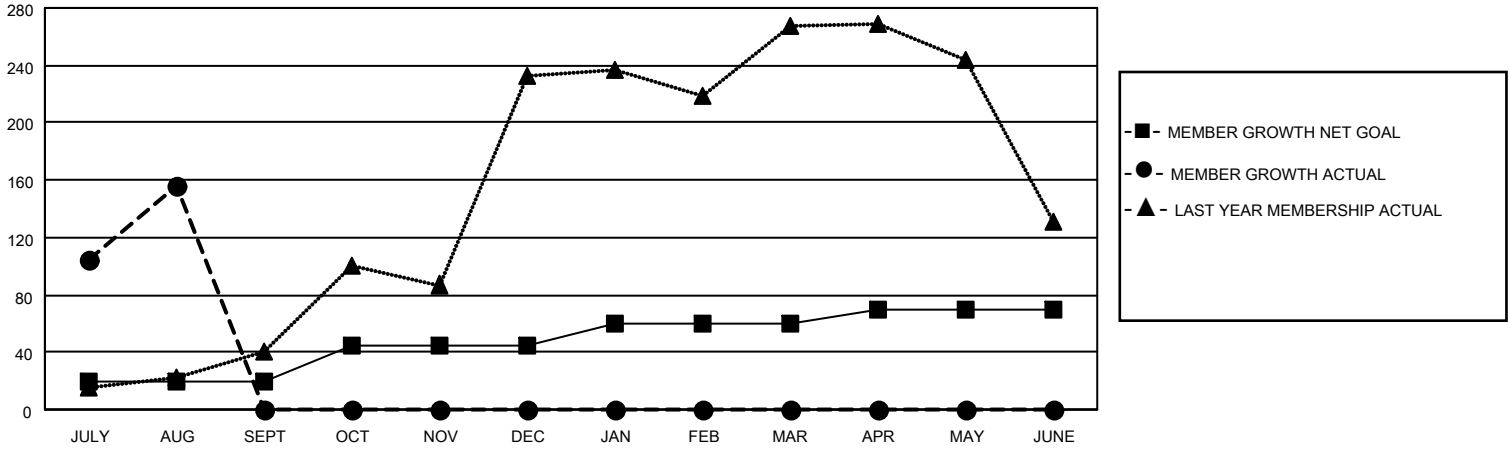
Clubs			
RESULTS FOR 2021-2022			
QUARTER	NEW CLUB GOAL	NEW CLUBS	DROPPED CLUBS
JULY/AUG/SEPT	1	1	1
OCT/NOV/DEC	1	0	0
JAN/FEB/MAR	1	0	0
APR/MAY/JUNE	0	0	0

Members			
RESULTS FOR 2021-2022			
QUARTER	MEMBER GROWTH NET GOAL	MEMBER GROWTH ACTUAL	DROPPED MEMBERS ACTUAL (including transfers)
JULY/AUG/SEPT	20	201	21
OCT/NOV/DEC	25	0	0
JAN/FEB/MAR	15	0	0
APR/MAY/JUNE	10	0	0

**GOALS AND ACTUAL NEW CLUBS CUMULATIVE**



**GOALS AND ACTUAL MEMBERS CUMULATIVE**



<b>DROPPED CLUBS: 1</b>	
<b>DROPPED MEMBERS</b>	
DECEASED	0
CLUB CANCELLED	0
OTHER	21
<b>TOTAL</b>	<b>21</b>

26 CLUBS OF 73 ADDED 1 OR MORE NEW MEMBERS

[CLICK HERE FOR CUMULATIVE MEMBERSHIP DATA](#)

<u>GENDER DISTRIBUTION</u>	
MALE	1,987 (73.54%)
FEMALE	715 (26.46%)
NON BINARY	0 (0.00%)
PREFER NOT TO ANSWER	0 (0.00%)
<b>TOTAL FAMILY UNIT MEMBERS</b>	<b>1,256</b>
<b>FAMILY MEMBERS PAYING HALF DUES</b>	<b>684</b>